

Dandelions & Daisies

FREE DOWNLOAD PATTERN



Finished Size: 64" x 68" | by Northcott Studio
www.Northcott.com

DANDELIONS AND DAISIES







Finished Size: 64" x 68"

Collection: *Dandelions and Daisies by Frond Design Studios*

WOF = width of fabric

All seams are sewn using a ¼" seam allowance

REQUIREMENTS:

SKU #	Yardage	Cutting Instructions
Fabric A 40046-54 	1 1/3 yds (2 Panels)	Trim each flower to 20 ½" x 22 ½"
Fabric B 40048-99 	1/2 yd	Cut 1 – 14 ½" x WOF strip <ul style="list-style-type: none"> Sub-cut 2 – 14 ½" x 6 ½" rectangles & 2 – 12 ½" x 6 ½" rectangles
Fabric C 40053-25 	2 yds	Cut 1 – 6 ½" x WOF strip <ul style="list-style-type: none"> Sub-cut 5 – 6 ½" squares Cut 6 – 1 ½" x WOF strips <ul style="list-style-type: none"> Join strips together end to end From this long strip <ul style="list-style-type: none"> Sub-cut 2 – 54 ½" strips and 2 – 56 ½" strips Cut 7 – 2 ½" x WOF strips (set aside for Binding)
Fabric D 40047-45 	1 yd	Cut 11 – 2 ½" x WOF strips <ul style="list-style-type: none"> Join strips together end to end From this long strip <ul style="list-style-type: none"> Sub-cut 4 – 6 ½" strips; 2 – 20 ½" strips; 2 – 22 ½" strips; 2 – 28 ½" strips; 2 – 30 ½" strips; 4 – 54 ½" strips
Fabric E 40051-54 	1 1/4 yds	Cut 8 – 4 ½" x WOF strips <ul style="list-style-type: none"> Sub-cut 2 – 4 ½" x 56 ½" strips & 2 - 4 ½" x 64 ½" strips
Backing (Crosswise) 40050-53 	4 yds	Cut in half along the length of fabric to get 2 – 2 yd x WOF pieces. Sew pieces together along the selvage edges for a backing piece measuring approximately 72" x 84"

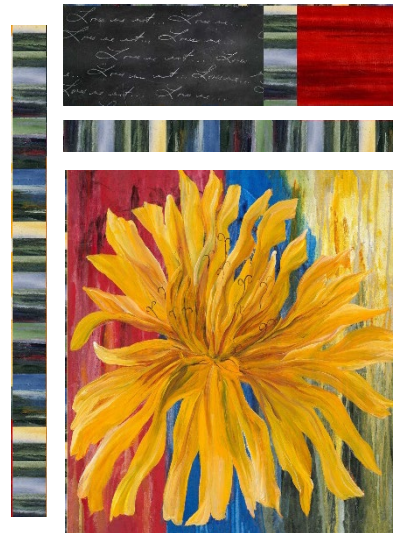
BLOCK 1 ASSEMBLY:

1. Sew a 14 ½" Fabric B rectangle together with a 6 ½" Fabric C square and a 6 ½" Fabric D strip as shown.
2. Add a 22 ½" Fabric D strip to one side.
3. Next, sew one of the Daisy blocks to the right side, noting the orientation.
4. To complete Block 1a, add a 28 ½" Fabric D strip to the bottom edge.
5. Repeat Steps 1 to 4 to make Block 1b.



BLOCK 2 ASSEMBLY:

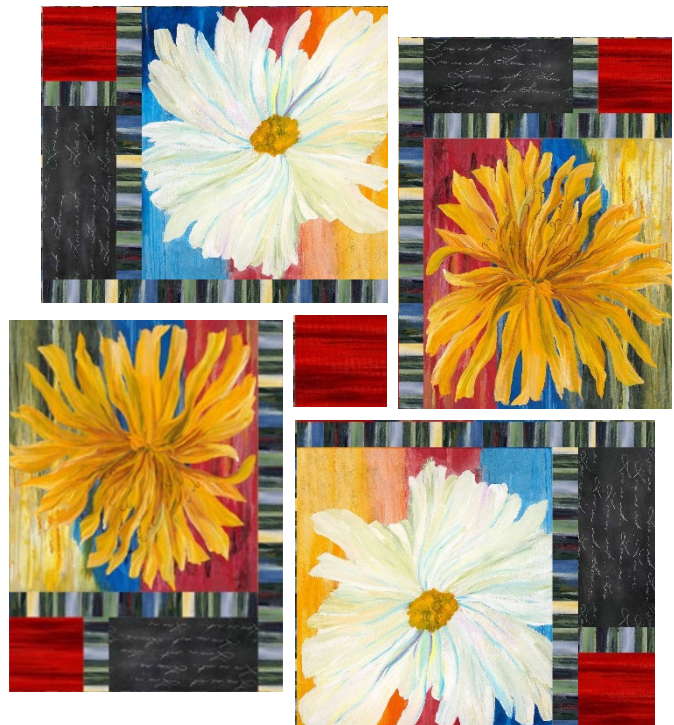
1. Sew a 12 ½" Fabric B rectangle together with a 6 ½" Fabric C square and a 6 ½" Fabric D strip as shown.
2. Add a 20 ½" Fabric D strip to the lower edge.
3. Next, sew one of the Dandelion blocks to the lower edge, again noting the orientation.
4. To complete Block 2a, add a 30 ½" Fabric D strip to the left edge.
5. Repeat Steps 1 to 4 to make Block 2b.



QUILT TOP ASSEMBLY:

NOTE: Partial seam construction is used to join the blocks to the center square.

1. Aligning the right edges of Block 1a (top left) and Center Square and starting at the mid point of the center square, sew a 6 ½" Fabric C square to the bottom right edge of Block 1a as shown. Press partial seam toward the square.
2. Then sew Block 2a (top right) along the right edge.
3. Next, sew Block 1b (bottom right) along the bottom edge.
4. Add Block 2b (bottom left) to the left side of Block 1b.
5. Finally, starting at the partial seam started in Step 1, sew the seam between Block 1a & 2b.



6. Sew the 54 ½" Fabric D border strips to the quilt top, adding the side borders first, then the top & bottom borders.
7. Add the Fabric C border to the quilt top in the same manner, adding the 56 ½" strips to the sides of the quilt first, then adding the 54 ½" strips to the top & bottom of the quilt.
8. Add the Fabric E outer border in the same manner, adding the 64 ½" strips to the sides of the quilt first, then adding the 56 ½" strips to the top & bottom to complete your quilt top.
9. Join the Fabric C binding strips using diagonal seams. Fold the strip in half, wrong sides together, along the length of the strip.
6. Layer quilt top with batting and backing. Quilt as desired. Bind using your favorite method.